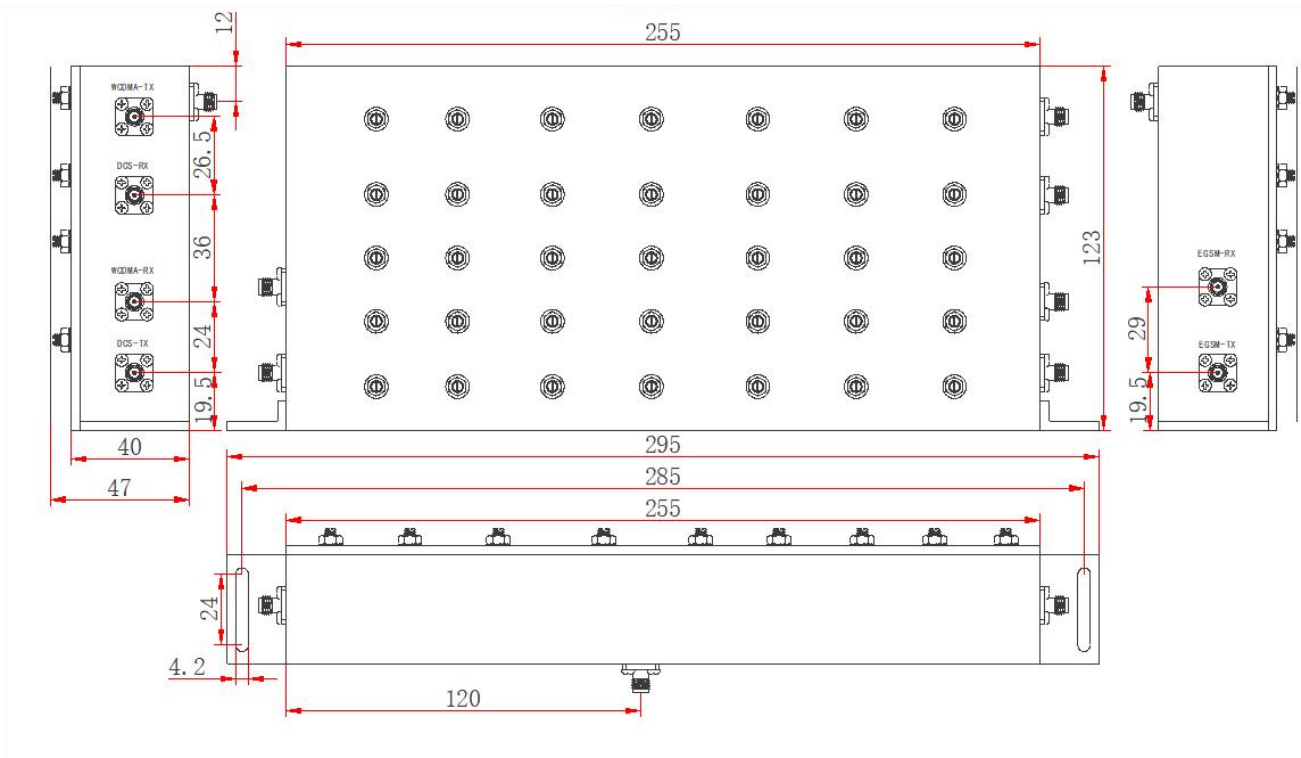


Hexaplexer 900/1800/2100MHz

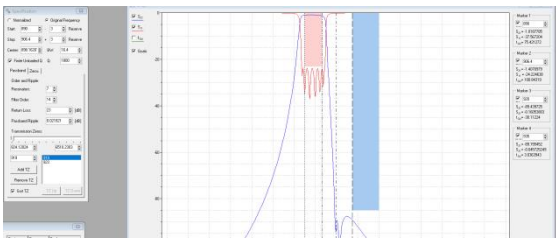
Specifications :

Model No.	HT-HEXA-091821-SMA-F					
HT part code	9608160120					
Electrical characteristics						
Item	Band8-Rx	Band8-Tx	Band3-Rx	Band3-Tx	Band1-Rx	Band1-Tx
Frequency(MHz)	890-915	935-960	1710-1760	1805-1855	1920-1980	2110-2170
Bandwidth(MHz)	25	25	50	50	60	60
Insertion loss	≤1.5dB	≤1.5dB	≤1.5dB	≤1.5dB	≤1.2dB	≤1.0dB
In-Band Ripple	≤1.0dB	≤1.0dB	≤1.0dB	≤1.0dB	≤0.6dB	≤0.5dB
Intersection suppression(MHz)	≥45dB @925		≥45dB @1782.5		≥45dB @2045	
			≥45@1887.5		≥45@1887.5	
Isolation (dB)	≥80@935-960	≥80@890-915	≥80@1805-1855	≥80@1710-1760	≥80@2110-2170	≥80@1920-1980
	≥90@1710-1880MHz		≥90@1710-1880MHz		≥90@890-960MHz	
	≥90@1920-2170MHz		≥90@1920-2170MHz		≥90@1710-1855MHz	
VSWR	≤1.25					
Input power (W)	50W/per port (average power)					
color	Black					
Environment characteristics						
Operation temperature	-20°C to +65°C					
Storage temperature	-40°C to +85°C					
Relative humidity	5% - 95%					
Mechanical characteristics						
Connectors	SMA-F					
Net Weight (kg)	***					
Dimension, mm	255X123X47					
Packing	1Pce in box					

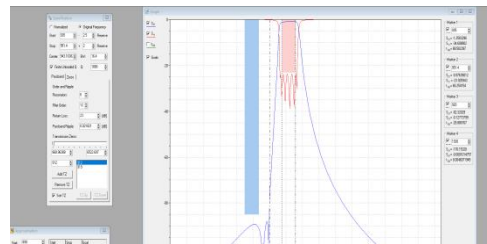
Outline drawing :



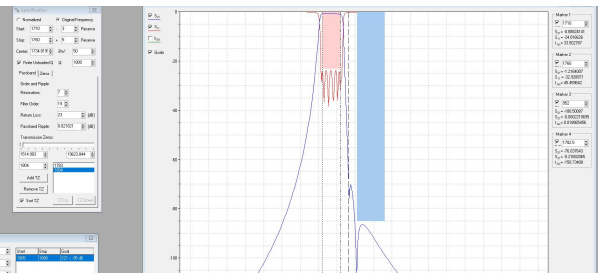
890-906.4



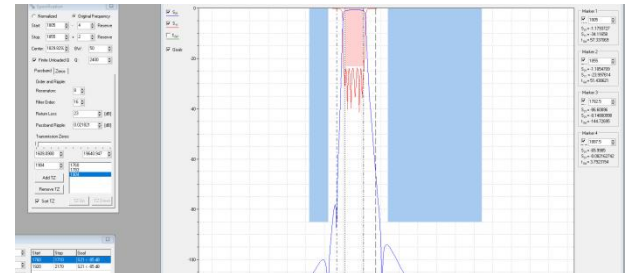
935-951.4



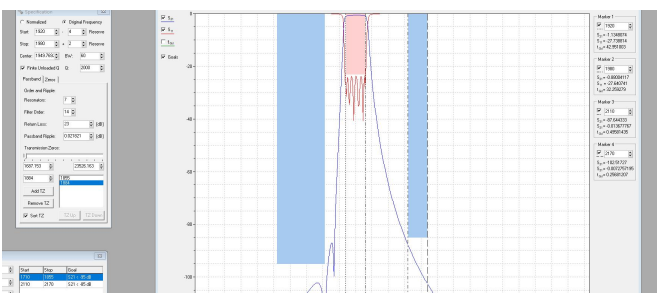
1710-1760



1805-1855



1920-1980



2110-2170

